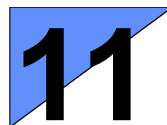

Network Administrator



ReservePro Network is designed to run on a network where it can be shared by a designated workgroup. Anyone on the network has access to the files, while file integrity is maintained. ReservePro Network simplifies license management, updates, backups and maintenance. This chapter discusses requirements for proper network installation.

In This Chapter...

◆ System Requirements	11-1	◆ Running ReservePro as a Network Service	11-5
◆ Definition of Network	11-2	◆ Starting ReservePro	11-6
◆ SentinelLM License Manager	11-2	◆ Uninstalling ReservePro	11-7
◆ Installation	11-3		

System Requirements

For optimum product performance, you will need the following:

- Windows 95/98/NT4/2000+ operating system
- TCP/IP networking protocol
- Shared local area network within a workgroup
- At least 15 mb of disk space on a server (or a dedicated machine) designated to run the server software
- 1 mb of disk space on each workstation designated to run ReservePro

Definition of Network

Several issues must be addressed for successful implementation of ReservePro Network. The most important is our definition of what constitutes a network. For the purpose of effectively running ReservePro Network, we define a network as:

A configuration of devices and software where information and communication is exchanged and shared within a selected group of workstations.

This definition is synonymous with that of a local area network (LAN) designed for small workgroups. It is **not** intended for use by external workgroups or across a wide area network.

TCP/IP Network Protocol

A protocol is the *language* used by a computer to communicate over a network. Computers within a network must use the same protocol to communicate with each other. ReservePro Network requires TCP/IP as its communication protocol.

If you are currently connected to a network or have Internet access, TCP/IP is probably already enabled. To determine if TCP/IP is enabled, review your network properties from the Control Panel. Contact your local network administrator if you need assistance.

SentinelLM License Manager

ReservePro Network is shipped with SentinelLM license manager, an application that manages the floating license for a specific site. The license manager runs transparently and will not degrade the performance of the host computer.

While not required, it is strongly recommended that you configure SentinelLM to run as a network service. This assures that it is available to provide access to the system without any waiting or

startup time, and it doesn't require a specific computer to always be running. See *Running ReservePro as a Network Service* below.

License Compliance

Each instance or copy of ReservePro requires one license. As each instance of ReservePro is executed, the license manager determines whether the request complies with the licensing agreement. It either supplies a valid license to ReservePro or it denies a license. If denied a license, that instance of ReservePro shuts down.

If granted a license, ReservePro continues to run and SentinelLM decrements the number of available licenses. As each instance or copy of ReservePro terminates, the license is returned to the pool of available licenses.

SentinelLM manages the instances of ReservePro running at any given time. Although ReservePro may be installed on any number of machines, the number of concurrent users of ReservePro may not exceed the number of licenses purchased. You may easily increase your number of licenses by calling **1 800 404-2276**.

Installation

Before installing ReservePro Network, take the following preliminary measures:

- Identify a shared or common drive.
- Identify the machines that will run ReservePro.

The actual installation of ReservePro Network is a 2-step process:

- 1 Installing the software to the shared or common drive.
- 2 At each workstation designated to run ReservePro, running the setup program (found in the folder containing ReservePro Network files) to copy the necessary files to that workstation.

Installing to a Shared or Common Drive

When installing the software directly to a shared or common drive, it is necessary to ensure that users have access rights to the destination location where ReservePro Network will be installed.

To install ReservePro Network, perform the following:

- 1 Make sure all Windows applications are closed.
- 2 Connect or map to a shared drive within a network environment.
- 3 Insert the ReservePro Network CD into the CD-ROM drive. The CD will automatically start.
- 4 Select **INSTALL RESERVEPRO**.
- 5 Follow the on-screen prompts to complete installation to the shared drive.

(An error may occur if the drive letter was not assigned (mapped) to a network computer or folder.)

When the installation is complete, a program group containing several utilities will be added and a program group listing for ReservePro Network will be available from the Taskbar.

Installing to Workstations

At each workstation designated to run ReservePro, run the setup program, found in the ReservePro Network folder. This setup program copies all necessary files to the workstation.

To install the required files to the workstation, perform the following:

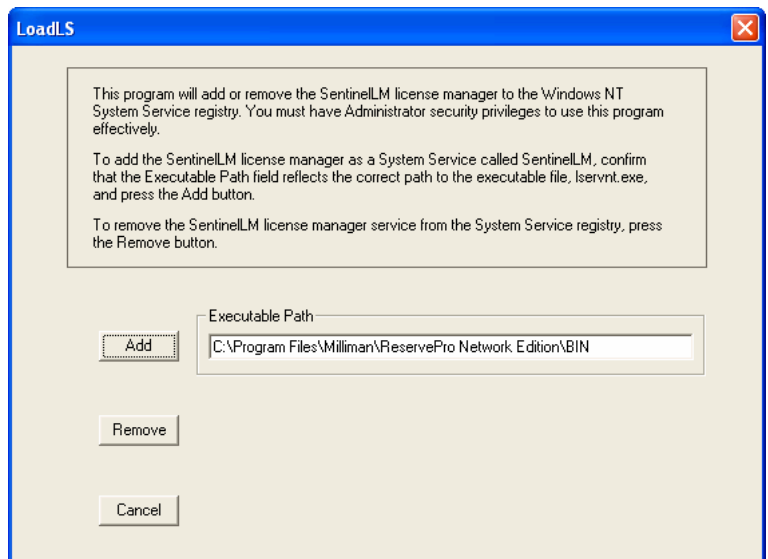
- 1 Go to each workstation designated to run ReservePro.
- 2 Make sure all Windows applications are closed.
- 3 Using **Windows Explorer**, locate the drive and folder containing the ReservePro Network files (most likely found under \Program Files\Milliman\ReservePro Network Edition).
- 4 Within the ReservePro Network Edition folder, double-click the **Setup.exe** file.
This action copies the necessary workstation files to the local drive.
- 5 Respond to all screen prompts to complete installation.

Optionally, a common directory may be identified for ReservePro data files that will be shared by all users. If so, the common drive must be manually configured **after** ReservePro is installed to the workstations.

Running ReservePro as a Network Service

The steps listed here are for configuring and running the system under Windows 2000 Server. You can use similar steps to configure the software to run as a service under Windows NT4.

- 1 Log onto the server as an administrator.
- 2 Navigate to the \Program Files\Milliman\ReservePro Network Edition\BIN directory and locate the **LOADLS.EXE** file. Double-click it.
- 3 Accept the defaults and select the **Add** button to record the network license manager software with the Registry.



- 4 Once you see the confirmation that the service has been installed, click OK.

- 5 Within the \Program Files\Milliman\ReservePro Network Edition\BIN directory, open the **LSHOST** file using Notepad.
- 6 Edit the **LSHOST** file so that it contains the static IP address of the server (you will need to replace the example IP address in the file).
- 7 To find the IP address of the server machine, run the ReservePro command **SHOWMYID.EXE** (found in the \Program Files\Milliman\ReservePro Network Edition\BIN directory or under Start|All Programs|ReservePro Workstation|Show My ID).
- 8 If the IP address of the server machine changes, the **LSHOST** file must be altered each time the server gets a new IP address, so a static IP address is preferable.
- 9 You are now finished. The ReservePro network license manager has been configured to constantly run on this machine as a network service.

Starting ReservePro

ReservePro may be started from any workstation where ReservePro is installed as a client application.

- 1 At the workstation computer, click **Start** on the Taskbar. Windows opens the **START** menu.
- 2 Select **All Programs|ReservePro Workstation**, then click **ReservePro**.
Detailed information for running ReservePro for the first time may be found in Chapter 2, *Welcome to ReservePro*.

File Sharing

ReservePro Network gives you the option of working with files saved to the local drive or sharing files saved to the network drive. When you work with shared files, ReservePro monitors the file usage.

The first person opening a shared file gets full privileges to add, modify and save data. All subsequent users accessing an open shared

file are notified that the file is in use by a specific user and they have the option of opening a *read-only copy* of this file.

The file opened as a read-only copy **may not** be updated. However, it may be saved under another name.

Uninstalling ReservePro Network

Removing ReservePro Network software is a two step process. Detailed information is presented below.

For ReservePro Workstation software, only files copied to the workstation during installation will be removed; data files will *not* be removed by the uninstall process.

For ReservePro Network software, if it becomes necessary to remove ReservePro Network from the server, all files and program groupings **must** be manually deleted.

Uninstalling From a Workstation

When uninstalling the software through Add or Remove programs, all files, folders and icons will be removed from an individual workstation. All nested folders will also be removed, providing no additional files are found that were not installed by the original ReservePro install/uninstall process. (Any data files will be left intact by the uninstall process.)

To uninstall ReservePro from a workstation, perform the following:

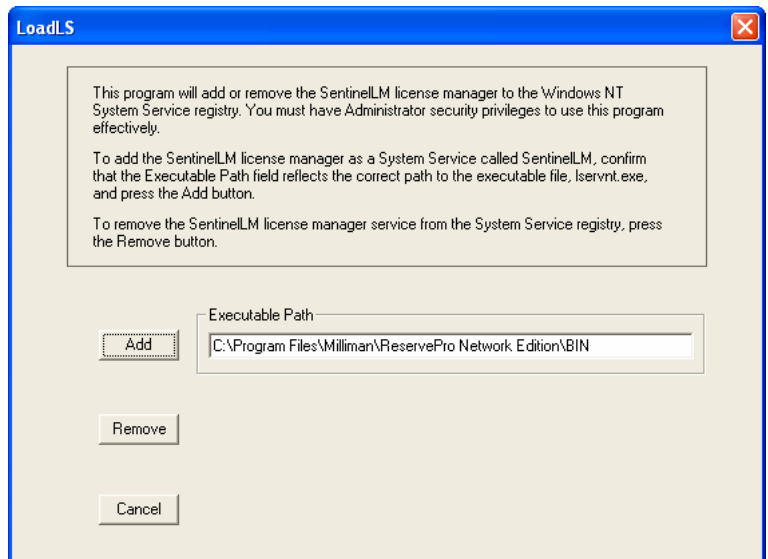
- 1 At the workstation computer where you want to remove ReservePro, click **Start** on the Taskbar. Windows opens the START menu.
- 2 Select **All Programs|Control Panel|Add or Remove Programs**.
- 3 Find **ReservePro Workstation** and click on the **Change/Remove** button.

- 4 Click **OK** in the Confirm File Deletion dialog box.
- 5 Once the uninstall is complete, click **Finish** in the InstallShield Wizard dialog box.

Uninstalling From the Network

An uninstall program is not provided to remove ReservePro Network. This was intentional, to prevent the accidental deletion of ReservePro Network. To completely remove ReservePro Network from your network, perform the following:

- 1 Log onto the server as an administrator.
- 2 At the network computer, click **Start** on the Taskbar. Windows opens the **START** menu.
- 3 Select **All Programs|ReservePro Network Server**, then click **FindManager**. This action will determine whether the RP Manager is active. If it is active, close the application **before** continuing.
- 4 Make sure that **all** instances of the ReservePro application are closed.
- 5 Navigate to the \Program Files\Milliman\ReservePro Network Edition\BIN directory and locate the **LOADLS.EXE** file. Double-click it.
- 6 Accept the defaults and select the **Remove** button to remove the network license manager software from the Registry.



- 7 Once you see the confirmation that the service has been removed, click OK.
- 8 Using **Windows Explorer**, locate the folder containing the ReservePro Network files.
- 9 Click the **ReservePro Network Edition** folder to select it.
- 10 From the **Menu** bar select **FILE|DELETE**. The system responds with the following message:

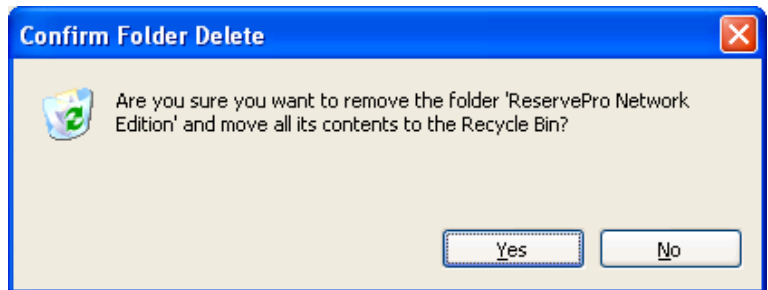



Figure 11-1 Confirm Folder Delete dialog box

- 11 Click  to confirm deletion