

Using ReservePro with Windows® Vista or Windows 7

Overview

With the release of Windows Vista, Microsoft introduced a number of new features to increase the security of the operating system. As a result, there is now much tighter control over who can install software on your computer, how software is physically configured when it's installed, who can run the software, and how the software runs, saves its files, and records its own settings.

These newer settings were also carried forward to Windows 7, so if you are working in that environment, these same procedures apply. All references below to Vista also apply to a Windows 7 implementation.

In Vista, even if you are logged into the computer as a user with "Administrator" rights, you are not automatically allowed to use administrator-level privileges. Instead, most actions and programs continue to run as if started by a standard non-administrative user (e.g., one with less than full rights). You can temporarily assume administrative privileges by specifically requesting them, and ideally you should do this only when necessary.

In order to install ReservePro under Vista, you will not only need to be logged in as a user with Administrator privileges, but you will also need to execute and run the installation programs by selecting "Run as Administrator." If you do not use "Run as Administrator" the operating system will deny the install program access to update the necessary folders and registry entries.

Installing ReservePro under Vista

If you are installing the ReservePro software from a CD-ROM, *do not* follow the menu that appears when you insert the disk into your computer.

Instead, select **Exit**, then view the CD with Windows Explorer, and navigate to the setup file, probably

D:\ReservePro\Disk1\setup.exe.

Right-click on the setup.exe file, and select **Run as Administrator**.

If a copy of ReservePro is already installed on your computer, the first time you run setup.exe the system will actually uninstall the current copy. You should then run setup.exe again as noted above to install the new system.

Using ReservePro with Windows® Vista or Windows 7

If you received the ReservePro system as a download from our Web site, then simply right-click on the downloaded file and follow the directions as noted above.

Option #1 – Run as Administrator

Like running the installation, one option for running the system on your computer is to always run it with Administrator rights. Some companies' policies may not allow this, and it not really Vista's preferred way to run programs—it violates some of the new security concepts that Microsoft implemented with Vista. If you don't have sufficient rights on your computer to do this, you'll need to use Option #2 below instead. And in fact, Option #2 is generally Microsoft's preferred way to implement an application like ReservePro.

To run ReservePro as an Administrator:

1. Press **START** and navigate to **All Programs | ReservePro**.
2. Do *not* click on ReservePro to start the program. Instead, *right-click* on the icon and select **Run as Administrator**.

Option #2 – Configure a ReservePro “user” directory (preferred)

Vista's preferred approach to installing applications like ReservePro is to create a separate folder under your “User” directory, copy all the necessary program and user-related files to that directory, and give you full rights to that directory.

While there are a couple of steps you have to take in order to configure ReservePro (all outlined below), Vista and ReservePro will do most of the configuration work for you.

Specifically, once you have installed the software as noted in *Installing ReservePro under Vista* above, you will (a) set an environment variable to tell ReservePro how to run, and (b) create a special directory for ReservePro to use for its files.

Using ReservePro with Windows® Vista or Windows 7

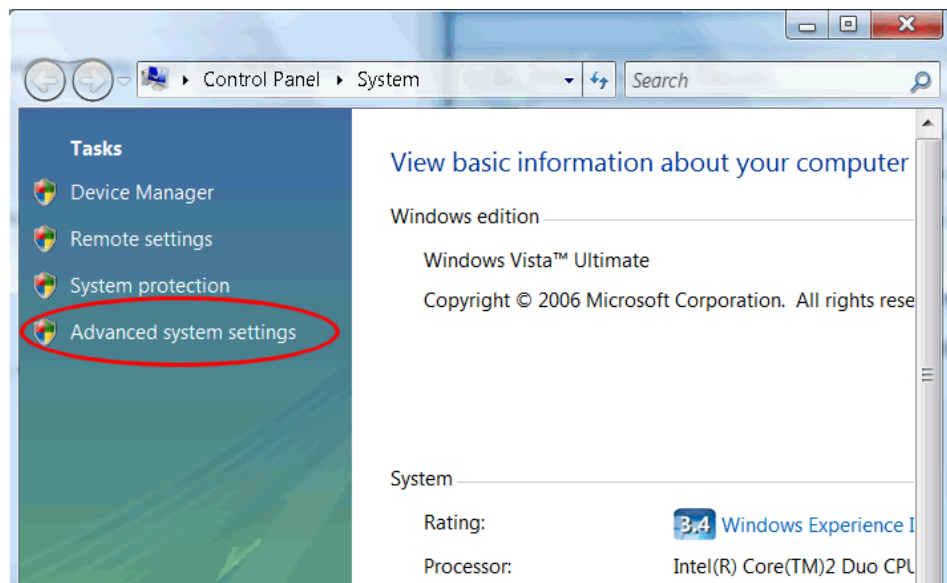
Step 1. Install the software using Run as Administrator

Install the software as noted in *Installing ReservePro under Vista* above.

Step 2. Set the environment variable.

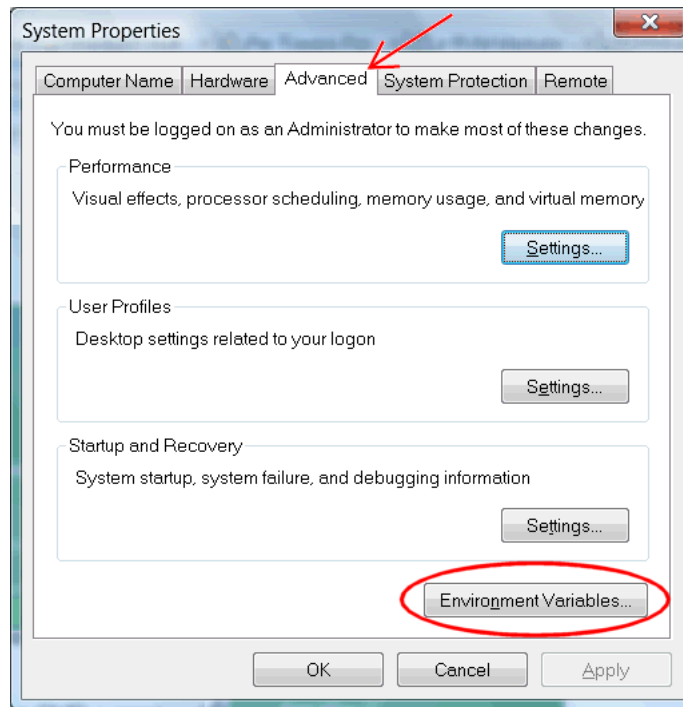
Define the variable `RP_TERMSEV_RP` and set its value to *Yes*.

1. Press **Start**, then right-click on **Computer** and select "Computer System Properties." The resulting screen should look like the one below. Select **Advanced System Settings**.

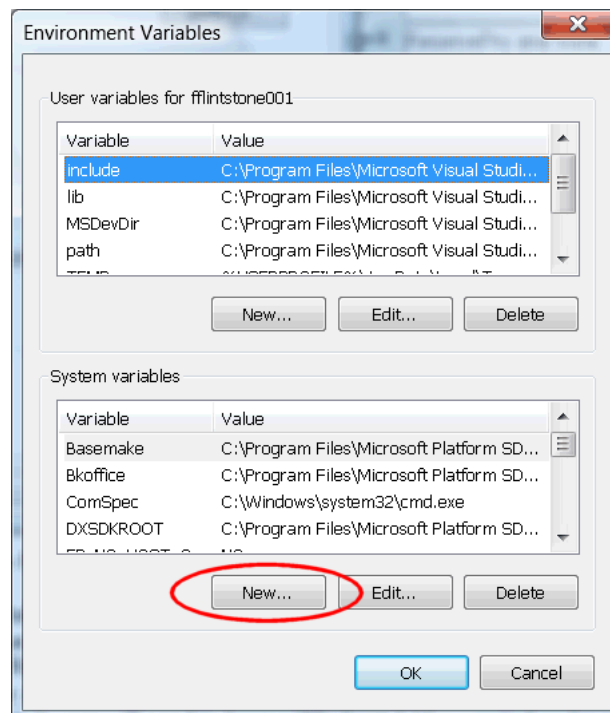


2. On the "Advanced" tab, press the **Environment Variables** button on the bottom of the screen.

Using ReservePro with Windows® Vista or Windows 7

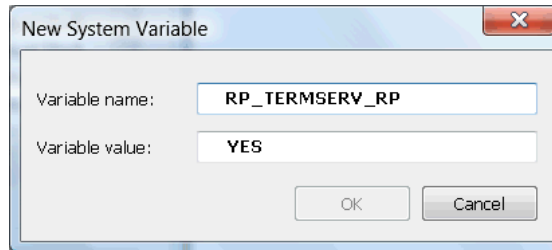


3. On the Environment Variables screen, press the **New** button for the System Variables (the *bottom* New, *not* the upper one which is limited to only the active user).



Using ReservePro with Windows® Vista or Windows 7

4. Enter the new variable **RP_TERMSEV_RP** and set its value to **YES**. Then press **OK**.



Step 3. Create a user-specific Windows directory.

1. Go to a command prompt. Click **Start**, then **Run...** Enter **CMD** and press **OK**.
2. At the prompt, type **SET** and press **Enter**. Make note of the settings for **HOMEDRIVE** and **HOMEPAH**. Typical examples might be something like:
HOMEDRIVE = C
HOMEPAH = \USERS\YOURNAME
3. Using the Windows Explorer, navigate to the folder identified by **HOMEDRIVE+HOMEPAH** (e.g., C : \USERS\YOURNAME). Create a new sub-folder under that directory called **WINDOWS**.
4. If you haven't done so, you can close the CMD prompt window. Type **EXIT** at the prompt and press enter.

You should now be able to run ReservePro in its native state (no need to Run as Administrator). The first time it runs, ReservePro will automatically create a \ReservePro folder and store all its user files there (\Data folder, \Styles folder, and the related DEF files). It will also put a copy of RESPRO4.INI in the new Windows folder you created. ReservePro will use **HOMEDRIVE+HOMEPAH+ReservePro** for all its files from this point forward.

Using ReservePro with Windows® Vista or Windows 7

Additional notes

If more than one person will be using this same computer, each user will need to have his or her own Windows folder created under the path specified by HOMEDRIVE+HOMEPATH.