



Known Issues

Affinity 3.5.1

3424 Peachtree Road, NE
Suite 1900
Atlanta, GA 30326 USA

Tel +1 800 404 2276
Fax +1 404 237 6984

actuarialsoftware.com

Issue:

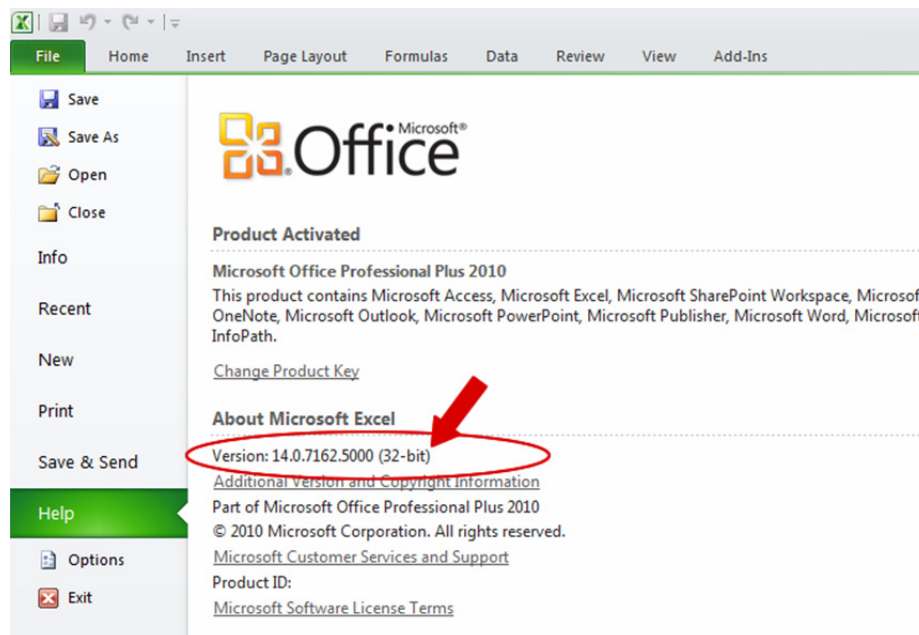
Affinity is *not* compatible with 64-bit installations of Excel, an optional version of Excel which is available with Excel 2010 and newer. Affinity is a 32-bit application, and it works with 32-bit installs of Excel.

Note that Affinity works with a 32-bit installation of Excel even if it is installed and running in a 64-bit version of Microsoft Windows.

Solution:

- When installing Excel 2010 or newer, you must choose the 32-bit installation to remain compatible with Affinity. The 32-bit version is the default install of Excel unless you specifically select to install the 64-bit version.
- 64-bit and 32-bit versions of Excel will not run together on the same computer. If you need 64-bit Excel for other reasons, one alternative is to work in a separate virtual machine (VM) on which Affinity and 32-bit Excel are both installed.

You can tell which version of Excel you have by opening Excel and going to **File | Help**:



Issue:

Potential installation/configuration issue: It is possible that, when making changes to your File|Preferences dialog, you may encounter an Invalid Path error message and your preferences are then not saved. This can be caused by very long directory names or directory names containing spaces.

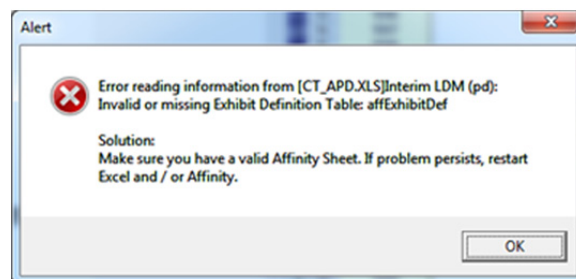
Solution:

You will need to manually update your settings in the PCRES.ini file where these settings are stored.

1. Open Windows Explorer and navigate to the following directory:
C:\Users\Username\AppData\Local\VirtualStore\Windows
2. **Right-click** on the PCRES.ini file and select **Open**. Then insert the following three lines and save the file.
 - OutPath=C:\Progra~2\Milliman\Professional Affinity\OUTPUT
(will depend on where Affinity was installed)
 - PathToExcel=C:\Progra~2\Microsoft Office\Office14
(will depend on your operating system and version of Excel)
 - UserLevel=1
3. If you must make this manual update, you will also need to grant write access for Affinity to properly update the PCRES.INI file.

Issue:

After creating a new Affinity file, you may receive an error message similar to the following upon resizing:

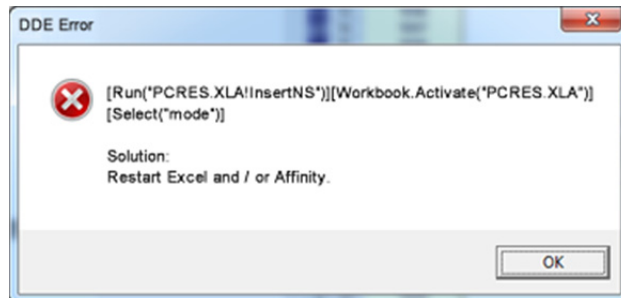


Solution:

Save and close the file in Excel, then re-open the file and then select **Edit | Refresh** within Affinity before trying to resize the file again. Once the file is saved, closed, and re-opened, it will resize without any issues.

Issue:

When using Affinity with Excel 2010 or 2013, you receive a Workbook.Activate PCRES.XLA error when creating or opening Affinity templates.



Solution:

Run Affinity as Administrator when in Excel 2013, and activate Excel from Affinity's menu before creating templates. This will allow Affinity to execute the command properly in Excel.

Issue:

Due to a number of changes Microsoft made within recent versions of Excel, there are several additional known issues, as follows:

- The Affinity Toolbar icons may not display properly in Excel 2010.
- The Affinity Toolbar may not display in Excel 2013.
- USRCOLOR.xls needs read/write access in the install directory. If not, you may experience issues when trying to update parameters or when resizing templates.
- Online Help may not work.
 - This last item is an issue that Microsoft is aware of, and they have provided a utility that replaces some of the functionality they removed from the operating system. You can download this utility by going to Microsoft's Web site at <http://support.microsoft.com> and searching for WinHlp32.exe
 - Be aware that virtually all of the Help information is also in the Affinity User Manuals, which are also available from your Affinity directory.

Issue:

When opening files which were saved in previous versions of Microsoft Office, you may see "#Ref" in cells where formulas reference PW functions.

Solution:

1. Start Affinity and select **File | Activate Excel**.
2. Open the file that was saved in an older version of Microsoft Office.
3. You should see the following Microsoft Excel message box: "The workbook you opened contains automatic links to information in another workbook. Do you want to update this workbook with changes made to the other workbook?" Select **NO**.
4. Press **Ctrl+Alt+F9**. (#REF! should appear wherever there are PW functions.)
5. In Excel, select **Edit | Links. (Data | Edit Links** - found in the Connections pane of Excel 2010 and 2013).
6. Under the Source file column, look for PCRES.XLA and select it. Press the **Change Source** button.
7. Within the Change Source message box, browse to the Affinity root directory and select **PCRES.XLA**.
8. Click **OK**.

This will take care of the links problem. You may need to recalculate (**F9**) once again to see all of the links update.

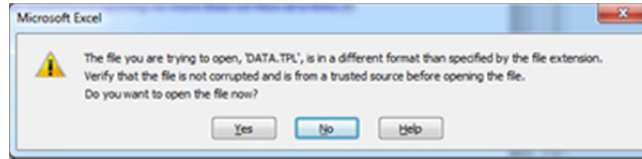
Issue:

When creating new multiple-tab files using Affinity, you may see #Ref in cells where formulas reference PW functions (this will occur only in certain Affinity templates).

Solution:

1. Start Affinity and select **File | Activate Excel**.
2. Select **File | Open** in Excel and scroll to and find the Affinity root directory (most likely *C:\Program Files\Milliman\Professional Affinity*).
3. Select the **All Files (*.*)** option. Sort all of the files by **Type** and scroll down until you find files of Type TPL File. These files are the Affinity templates.
4. Open the Professional Affinity templates (10 at a time) by selecting the files and clicking the **Open** button.

5. You might see something similar to the following Microsoft Excel message box ("...[file] is in a different format than specified by the file extension..."). Select the **Yes** button:



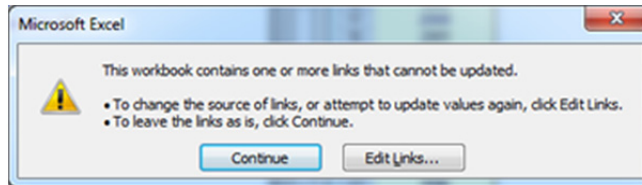
6. For each Affinity template that you open, you will also probably receive one of the following Excel messages:

Security Warning - Automatic update of links has been disabled

or

Security Warning – Some active content has been disabled

For each of the templates, you will then want to click on **Enable Content**. You will then see this message display.



Click on the **Continue** button.

7. Update the Affinity Links for all of the templates (using Add-Ins | Affinity | Affinity Utilities | Update Affinity Links or select the **Update Affinity Links** button in Excel) for each group of Affinity files. Do not make any further changes to your files.
8. Save the Affinity templates back to the same location (the Affinity root directory). You may get the following message:
xyz.tpl is a Microsoft Excel 5.0/95 Workbook. Do you want to overwrite it with the latest Excel Format?
Select **Yes** to update the files to the latest Excel format.

Issue:

Using Affinity with Office XP Excel can become unstable while creating multi-tab workbooks under certain situations.

Details:

1. Using Affinity and Office XP, create a multiple tab file including any of the following Affinity templates:

LDM (reported),

BFM (reported),

LDM with Standard Error (reported),

LDM with Standard Error and Tests (reported), or

the Modified Cape Cod (reported)

2. Create an Affinity Summary Page (**Affinity | Create Summary Page**). Select **Append to current file:** and click on **Reserves** under **Range Name to Summarize** and click **OK**.
3. On the Parameters Tab in Affinity, select **Edit | Refresh**. Then select any of the templates listed above, and click on **Averages** and then **Edit**. Select the **Tail Factor** tab and change the tail factor from **Specified Value** to **Calculated**. Then click **OK** and **Apply**.
4. When you go back into Excel and recalculate, Excel will no longer respond. You will then need to go to Task manager and select **End Task** to manually shut down Excel.

Workaround:

If you choose to summarize "Reserves," change the tail factor to "Calculated" before you create a summary tab, and this process will work correctly.