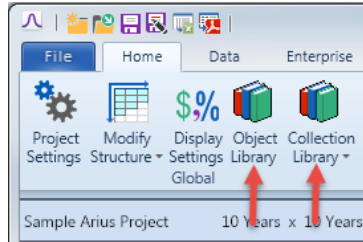


Working with Collections

You can access complete lists of the project’s objects and collections from the Arius Home ribbon.

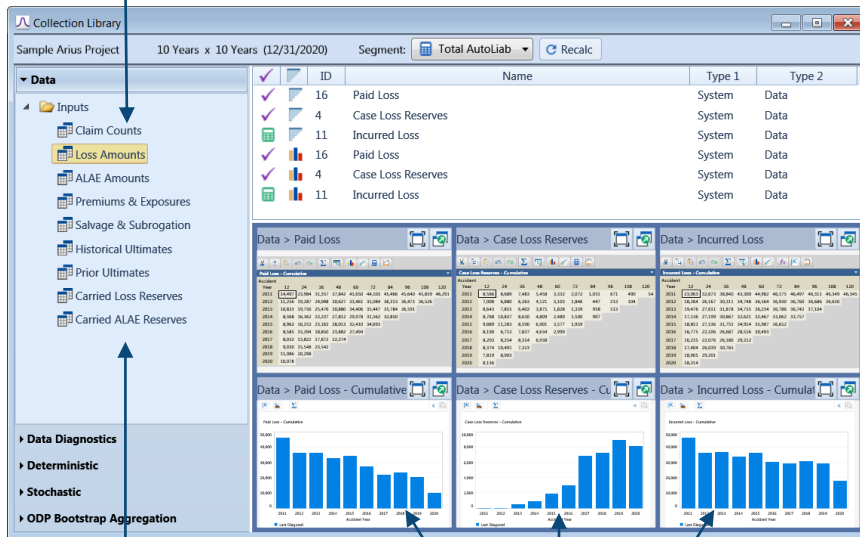


OBJECTS

- In Arius, objects are the tables you work with throughout the system. They include all data triangles, diagnostic exhibits, methods, and summary reports. A complete list of all objects is found in the Object Library.
- All of Arius’ standard objects automatically exist for all segments in every Arius project file. Selected objects from the Object Library are also found in the Navigation Pane, grouped in collections.

COLLECTIONS

This is the Navigation Pane.



Claim Counts, Loss Amounts, ALAE Amounts, etc. are all examples of collections.

Paid Loss, Case Loss Reserves, etc. are objects included in the Loss Amounts Collection.

Arius collections are the groupings that organize the specific objects you use in your analysis into a customizable and efficient workflow in the Navigation Pane. A collection groups together all the related objects you would typically work with in a specific part of your analysis. Shown above is the Loss Amounts standard collection which gathers related data triangles and graphs of those triangles including paid loss, case loss reserves, and incurred loss.

Another example of a collection is the Paid Loss Development standard collection found by expanding the Analysis and then Loss folders in the Deterministic node of the Navigation Pane. The Paid Loss Development collection includes the objects you would typically work with when reviewing a paid loss development (or chain ladder) method and related tables, including the data triangle, development factor exhibit, resulting method ultimate, an actual vs. expected method, and graphical representations of these objects.

Standard collections are provided in each Arius project as suggestions or jumping-off points for designing your own most efficient workflow. The complete list of standard collections can be accessed in the Collection Library found on the Home ribbon.

You can also create customized collections to more specifically address your needs or your preferred workflow. For example, you might want to customize the standard Paid Loss Development collection to include the Historical Ultimate Loss triangle. Or perhaps you would prefer to create three entirely new collections: one for your methods, one for your diagnostics, and one for your graphs. You might even create collections to reference in exports so you can drag and drop entire collections into an Export to Excel or Export to PDF list.

Add a standard collection to your Navigation Pane and workflow

1. Open the Collection Library from the Home ribbon in your Arius project (COLLECTION LIBRARY | OPEN COLLECTION LIBRARY).
2. Find the collection you wish to add to your workspace.
3. Drag and drop the collection name into a folder in the Navigation Pane.

(You can create a new folder in the Navigation Pane by right clicking on an existing folder and selecting **Add Folder**, then right clicking on the new folder to rename it as appropriate.)

Create a new collection in your Navigation Pane

You cannot modify Arius' standard collections but you can create your own custom collections. This can be done by copying an existing collection and editing it, or by creating a new collection from scratch.

Create a new collection from scratch

1. Right click on the folder in the Navigation Pane tree where you want to place your new collection and select **Add Collection**.
2. A window will open with a 3 x 3 grid. This will hold each of the objects you want in your new collection, one in each position in the grid.
3. Enter the name of your collection in the space at the top of this window. Change the number of rows and columns to allow enough grid spaces for each object you want to include in this collection. (Your estimate doesn't have to be perfect; you can always come back later and add or delete objects.)

4. While keeping the New Collection window open, open the Object Library. Navigate to the objects you want to add to your collection. Drag and drop objects from the Object Library into available spaces in your new collection grid.
5. After adding all objects, click **Save & Close**.

Create a new collection by copying and modifying an existing collection

1. Right click on an existing collection (either one of Arius' standard collections or a collection you have previously customized) and select **Copy Collection**.
2. A new collection will appear in the Navigation Pane with "- Copy" appended to the collection name.
3. Right click on the new collection, select **Rename Collection**, then enter a unique collection name.
4. Follow the steps below to update this new collection with the appropriate structure and objects.

Modify a collection

1. Right click on your collection name in the Navigation Pane and select **Edit Collection**.
 - If Edit Collection is gray and unavailable then this is a standard collection. You must copy it and edit the copy.
2. A new window will open, displaying your collection grid. If necessary, change the number of rows and/or columns to allow enough grid spaces for each object you want to include in this collection, delete objects you wish to remove by clicking on the trash icon of that object, and rearrange existing objects as desired by dragging to the appropriate grid space.
3. When you're ready to add new objects, open the Object Library. In the Object Library navigate to each object you wish to add to this collection. Drag and drop these objects into an available grid space.
4. After adding all objects click **Save & Close**.

Add a graph to your collection

1. Edit your collection as described above.
2. Find the object underlying the graph you want to display in the Object Library. Double-click on the name of the object to open it in a separate object window (or launch a new window from a collection grid).
3. Click the appropriate graph icon found in the ribbon of the object window and set any desired options for the graph, then drag and drop this graph window into an available grid space in your collection.

Delete a collection

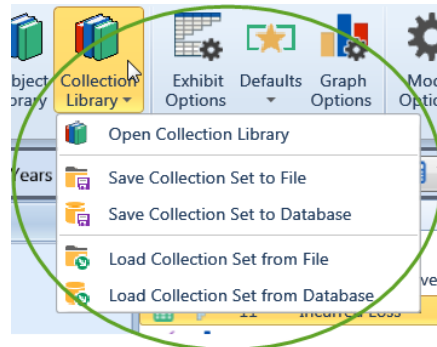
To delete a collection from the Navigation Pane, right click on the collection name and select **Delete Collection**. Deleting either a standard or custom collection does not delete the objects that are included in the collection—the collection is merely a display and organization tool; the objects will remain accessible from within the Object Library.

- If you delete a standard collection it is only removed from the Navigation Pane; it remains in the Collection Library. You cannot delete one of the system’s standard objects or collections.
- If you delete a custom collection it will be permanently deleted from your project.

COLLECTION SETS

All of the collections that are used to group and manage your workflow throughout a project are shown in the project’s Navigation Pane. All these collections taken together for the entire project (the .APJ file) are called a collection set. This set is available to support the workflow for all segments in the project.

Collection sets are a part of and specific to a particular project. Once you get the collections like you want them in one Arius project/file, you can save the collection set for reuse with other projects. The **Save Collection Set** function saves all the information necessary to open these same collections in another Arius project, or to revert back to these collections in the current project at some later date if necessary.



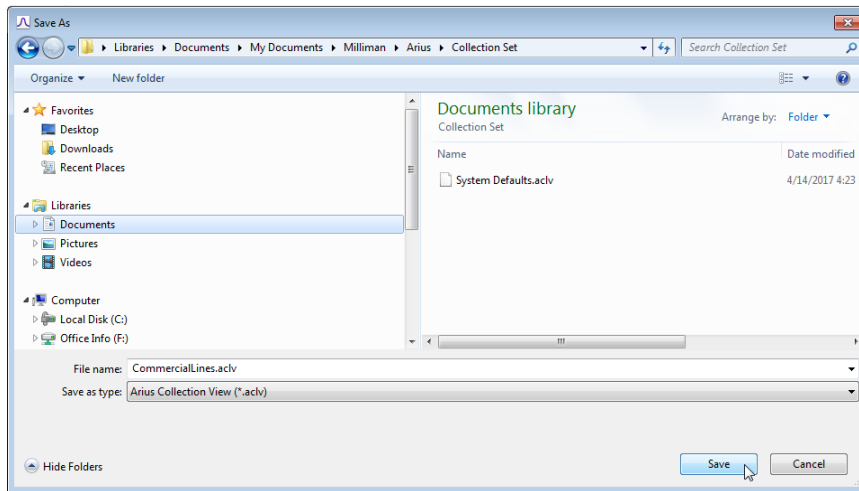
Save collection set

To save all the details in a project’s current Navigation Pane:

1. Select COLLECTION LIBRARY | SAVE COLLECTION SET TO FILE from the Home ribbon.

NOTE: The options to save to a database and load from a database refer to systems utilizing Arius Enterprise.

2. Give the collection set file a name and press **Save**.



Load collection set

To replace the collection set in use in the current Arius project with a different collection set:

1. Select COLLECTION LIBRARY | LOAD COLLECTION SET from the Home ribbon.
2. Select a Collection Set to import into the current project and press **Open**.

The new collection will replace the collections in use in the current Navigation Pane.

Note that a new collection set will not delete any objects or data in the file it is imported into. A collection set is merely a tool for grouping objects in the file into a manageable workflow.

Revert back to the original collection set

The collection set in use in a new Arius project comes from a default collection set file on your computer. You can reload the original default collection set back into your Arius project at any time.

1. Select COLLECTION LIBRARY | LOAD COLLECTION set from the Home ribbon.
2. Navigate to the collection set subdirectory and select the file **System Defaults.aclv** and press **Open**.