

## OVERVIEW

Collections are groupings of objects and graphics that provide the ability to organize your Arius analysis into a customizable and efficient workflow in the Navigation Pane.

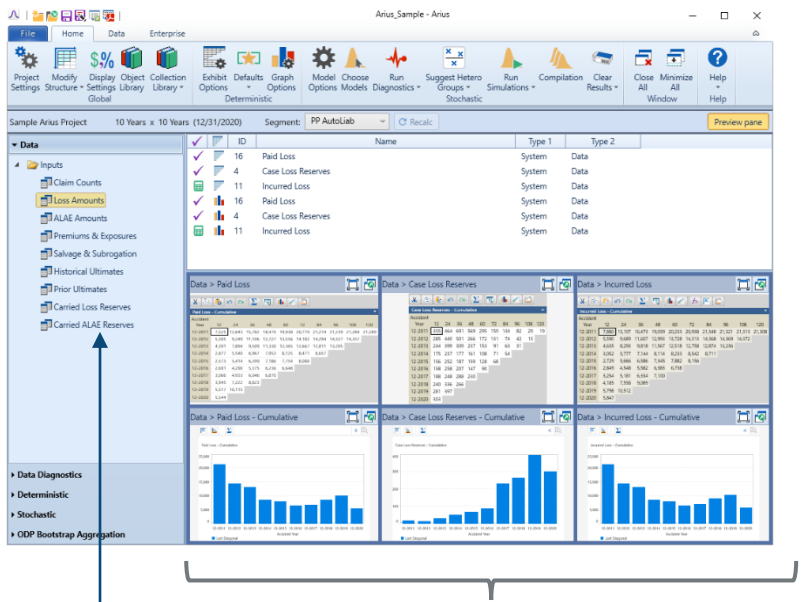
## OBJECTS

In Arius, objects are the tables you work with throughout the system; examples include the Paid Loss triangle, Paid Loss Development exhibit, and Paid Loss Development method tables. Every Arius project includes a standard set of objects, and you are able to create your own as well. A complete list of all objects in a project is found in the **Object Library** on the **Home** ribbon.

## COLLECTIONS

A collection groups together related objects you would typically work with in a specific part of your analysis. This grouping includes both a list of objects and a preview of those objects. Standard collections are provided in each Arius project as suggestions or jumping-off points for designing your own workflow. By default, standard collections are generally grouped by data vs. diagnostics vs. deterministic analysis vs. stochastic modeling, noted by the nodes on the tree, and then in folders for ease of navigation. The complete list of standard collections can be accessed in the **Collection Library** on the **Home** ribbon.

For illustration, the **Loss Amounts** collection highlighted below includes the standard loss data triangles—paid loss, case loss reserves, and incurred loss—and graphs of those triangles.



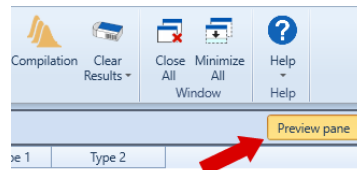
Claim Counts, Loss Amounts, ALAE Amounts, etc. are all examples of collections.

Paid Loss, Case Loss Reserves, etc. are objects and graphs of those objects in the Loss Amounts Collection.

You can also create customized collections to more specifically address your needs or your preferred workflow. Customization options also include the ability to create folder systems and move standard collections to different nodes and folders as desired.

### Toggle Preview Pane on and off

The preview of objects in collections is enabled by default, but you have the ability to toggle the preview on and off using the **Preview Pane** button. Arius keeps every cell of every table object updated with all changes throughout the system. If you are working with very large triangles, keeping all the displayed cells updated real-time on your desktop can consume enough system resources to begin to affect the system's processing. Thus, turning off this display can provide efficiency benefits for users with very large data triangles or in projects with a large number of segments.



### Add a standard collection to your Navigation Pane and workflow

1. Open the **Collection Library** from the **Home** ribbon in your Arius project (COLLECTION LIBRARY | OPEN COLLECTION LIBRARY).
2. Find the collection you wish to add to your workspace.
3. Drag and drop the collection name into a folder in the Navigation Pane.

(You can create a new folder in the Navigation Pane by right clicking on an existing folder and selecting **Add Folder**, then right clicking on the new folder to rename it as appropriate.)

### Create a new collection in your Navigation Pane

You cannot modify Arius' standard collections but you can create your own custom collections. This can be done by copying an existing collection and editing it, or by creating a new collection from scratch.

#### Create a new collection from scratch

*Tip: Launch the **Object Library** and arrange it beside the main Arius window to make the following process easier.*

1. Right-click on the folder in the Navigation Pane where you want to place your new collection and select **Add Collection**.
2. In the window that opens, enter the name of your new collection, modify the number of rows and columns to allow enough grid spaces for each object you want to include in this collection, then drag and drop objects from the **Object Library** into available spaces in the grid. (To add graphics, launch the graphic first and click on the window title to drag and drop.)
3. After adding all objects, click **Save & Close**. This new collection will now display for all segments in the project.

**Create a new collection by copying and modifying an existing collection**

1. Right-click on an existing collection (either one of Arius' standard collections or a collection you have previously customized) and select **Copy Collection**.
2. A new collection will appear in the Navigation Pane with - *Copy* appended to the collection name.
3. Right-click on the new collection, select **Rename Collection**, then enter a unique collection name.
4. Follow the steps below to update this new collection with the appropriate structure and objects.

**Modify a collection (not available on system-provided collections)**

1. Right click on your collection name in the Navigation Pane and select **Edit Collection**.
2. A new window will open, displaying your collection grid. If necessary, change the number of rows and/or columns to allow enough grid spaces for each object you want to include in this collection, delete objects you wish to remove by clicking on the trash icon of that object, and rearrange existing objects as desired by dragging to the appropriate grid space.
3. If you wish to add new objects, open the **Object Library** and drag and drop these objects into an available grid space. (To add graphics, launch the graphic first and click on the window title to drag and drop.)
4. When you are done, click **Save & Close**.

**Delete/remove a collection**

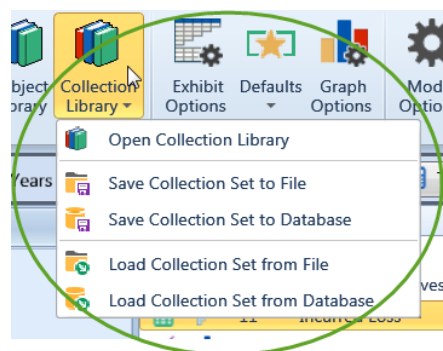
To remove a collection from the Navigation Pane, right-click on the collection name and select **Delete Collection**. Deleting either a standard or custom collection does not delete the objects that are included in the collection—the collection is merely a display and organization tool; the objects will remain accessible from within the **Object Library**.

- If you delete a standard collection, it is only removed from the Navigation Pane, not deleted from the project. It remains in the Collection Library, available if you change your mind later. (System-provided objects and collections are protected from changes or being deleted.)
- If you delete a custom collection, it will be permanently deleted when you save the project.

## COLLECTION SETS

All the collections that are used to group and manage your workflow throughout a project are shown in the project's Navigation Pane. All these collections taken together for the entire project (the .apj file) are called a *collection set*. This set is available to support the workflow for all segments in the project.

Collection sets are a part of and specific to a particular project. Once you get the collections like you want them in one Arius project/file, you can save the collection set for reuse with other projects. The **Save Collection Set** function saves all the information necessary to open these same collections in another Arius project, or to revert to these collections in the current project at some later date if necessary.



### Save collection set

To save all the details in a project's current Navigation Pane:

1. Select COLLECTION LIBRARY | SAVE COLLECTION SET TO FILE from the **Home** ribbon.

NOTE: The options to save to a database and load from a database refer to systems utilizing Arius Enterprise.

2. Navigate to the desired drive and folder, enter a name for the collection set file, and select **Save**.

### Load collection set

To replace the collection set in use in the current Arius project with a different collection set:

1. Select COLLECTION LIBRARY | LOAD COLLECTION SET from the **Home** ribbon.
2. Select a collection set to import into the current project and press **Open**.

The new collections will replace the collections in use in the current Navigation Pane. The entire left pane will be replaced.

Note that a new collection set will not delete any objects or data in the file it is imported into; a collection set is merely a tool for grouping objects in the file into a manageable workflow.

### Revert to the original collection set

The collection set in use in a new Arius project comes from a default collection set file on your computer (installed when you installed Arius). You can reload the original default collection set into your Arius project at any time.

1. Select COLLECTION LIBRARY | LOAD COLLECTION set from the **Home** ribbon.
2. Navigate to the collection set subdirectory  
C:\Users\username\Documents\Milliman\Arius\Collection Set, select the file **System Defaults.aclv**, and press **Open**.